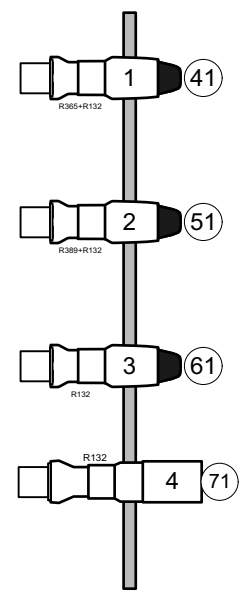
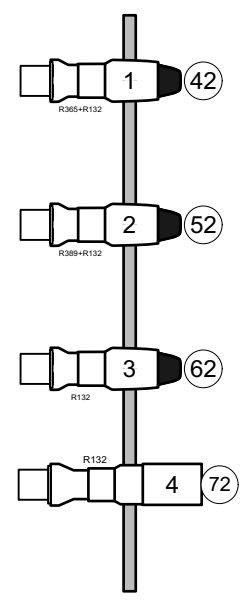


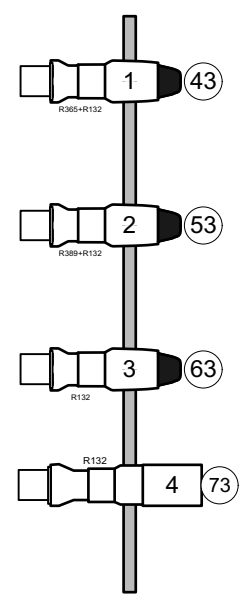
HR Boom #1



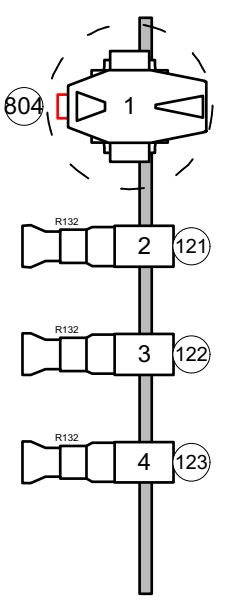
HR Boom #2



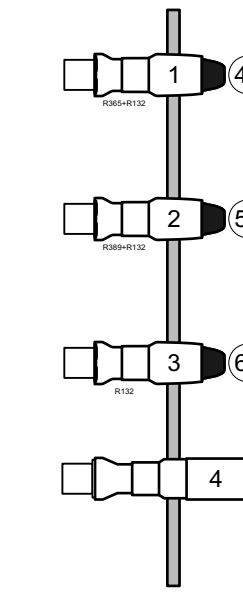
HR Boom #3



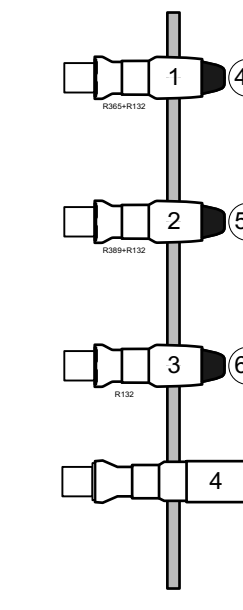
HR Boom #4



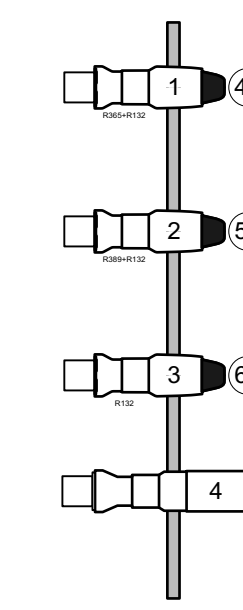
HL Boom #1



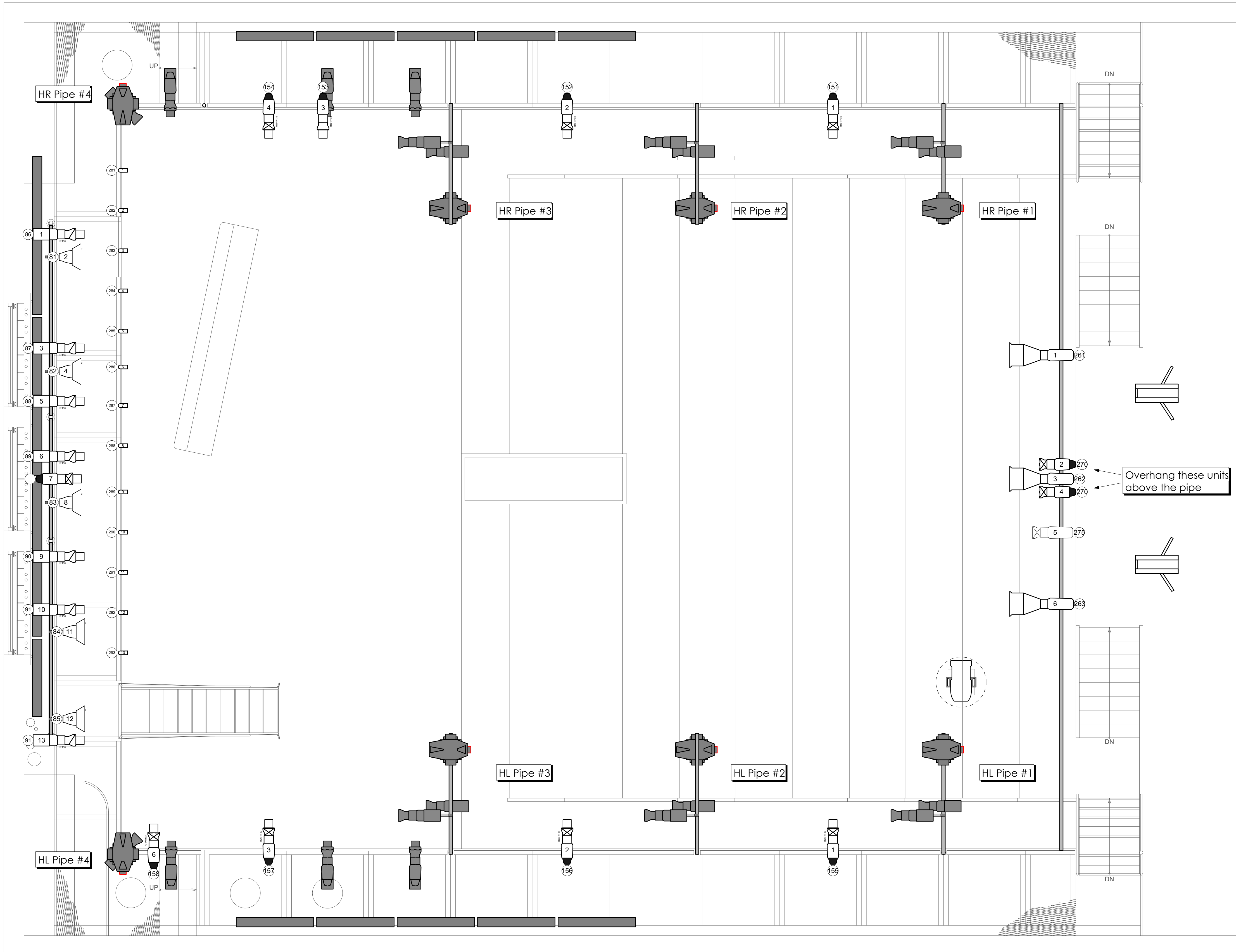
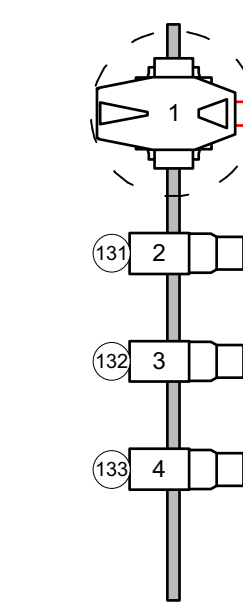
HL Boom #2



HL Boom #3



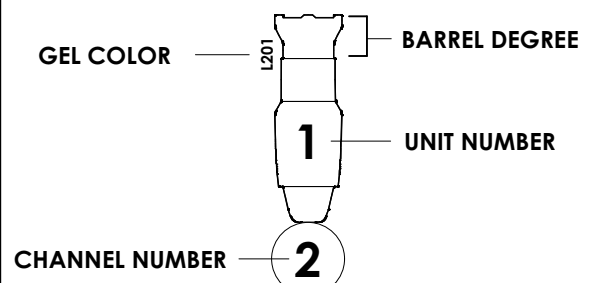
HL Boom #4



KEY

- ETC Source 4 19° 750w
- ETC Source 4 26° 750w
- ETC Source 4 36° 750w
- ETC Colorsource Spot 19° 160w
- ETC Colorsource Spot 26° 160w
- ETC Colorsource Spot 36° 160w
- ETC Colorsource Par NR 90w
- P16BNL MR 16 Birdie
- Colorblaze 2' TRX 22° 315W
- High End Solaframe Spot 2000
- 2' Sidearm
- 6.25' Top Hat
- 4 Panel Barn Door

LABEL LEGEND



NOTES

- Units are 1'6" centers (Unless noted)
- Trims are from SHOW DECK
- Please have extra R132 & R119 at Focus

VERSIONS

Version	Date & Note
V1	11/3/19

THIS DRAWING REPRESENTS VISUAL CONCEPTS AND CONSTRUCTION SUGGESTIONS ONLY. IT DOES NOT REPLACE THE KNOWLEDGE AND ADVICE OF A LICENSED STRUCTURAL ENGINEER. THE DESIGNER IS UNQUALIFIED TO DETERMINE THE STRUCTURAL APPROPRIATENESS OF THIS DESIGN AND WILL NOT ASSUME RESPONSIBILITY FOR IMPROPER ENGINEERING OR USE.

DIRECTED BY	Andrew Cisna
LIGHTING BY	Michael Winston
SCENERY BY	N/A
COSTUMES	N/A
SOUND BY	N/A
ASST. LX DESIGNER	N/A
Master Electrician	N/A

Some Police Station
Urinetown The Musical



Michael Winston
Lighting Designer
mwinston13@hotmail.com
204-234-0215
forthewinston.weebly.com

VERSION:	SCALE:	SHEET
V1	3/8" = 1'	1 of 3
DATE:	11/3/19	

Overhead