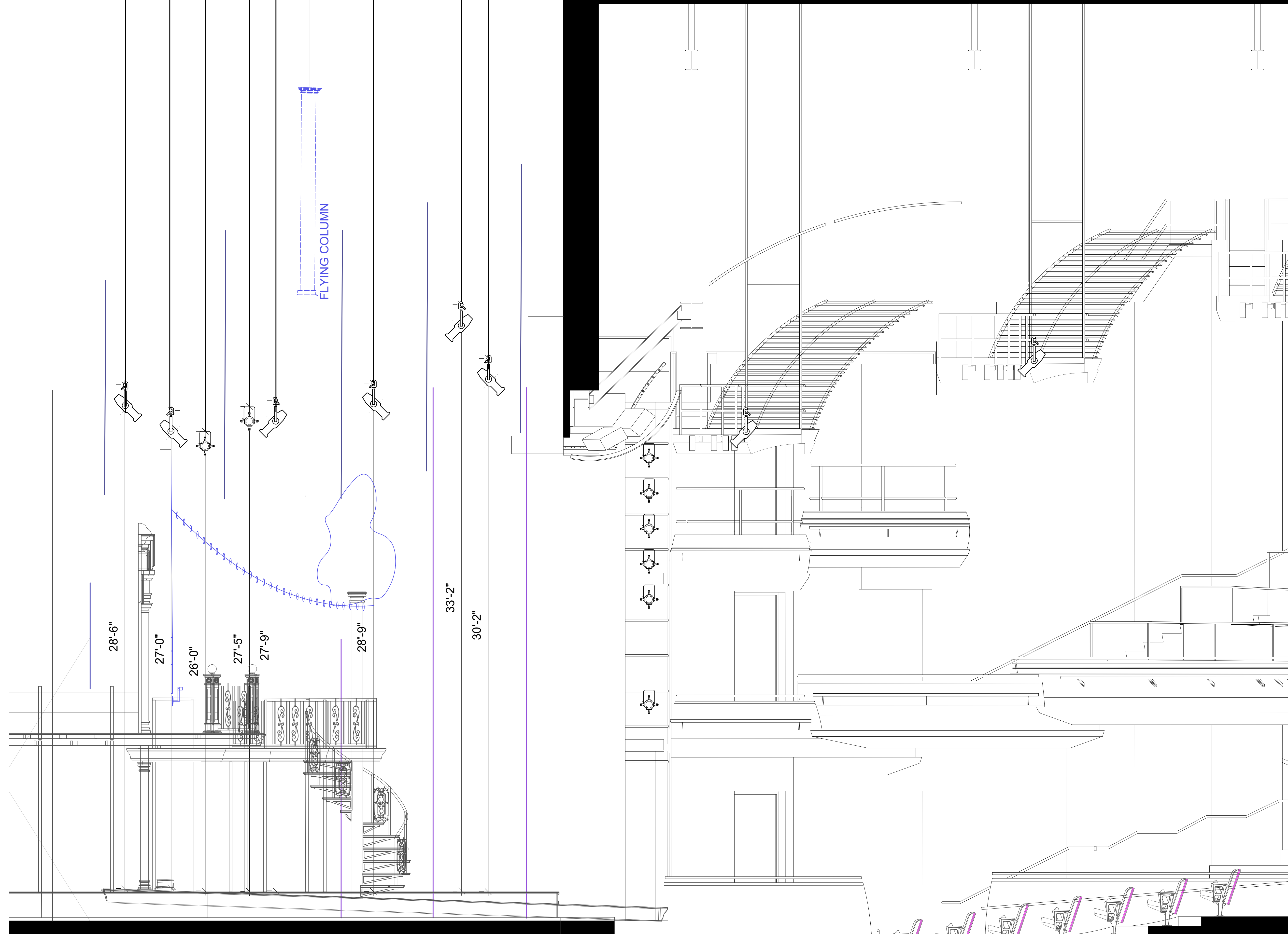


- 59 Black Scrim
- 57 White Scrim
- 56 Extra Leg
- 54 Extra Leg
- 53 Leg
- 52 Border
- 51
- 49 OFF ST TAB 48
- 48 ON SR TAB 48
- 47
- 46 (8th Electric)
- 45
- 44 (3A Electric)
- 43 RP Screen
- 42 Mid-Stage Travels
- 41 (7th Electric)
- 40 leg
- 39 Border
- 38
- 37 (6th Electric)
- 36
- 35
- 34
- 33
- 32 (5th Electric)
- 31
- 30
- 29 (4th Electric)
- 28 Leg
- 27 Border
- 26
- 25 Flying Column
- 24 ON SL TAB 48
- 23 OFF SL TAB
- 22
- 21 Flying Column
- 20
- 19 (3rd Electric)
- 18
- 17
- 16 Leg
- 15 Border
- 14
- 13
- 12
- 11
- 10
- 9 (2nd Electric)
- 8
- 7
- 6 (1st Electric)
- 5
- 4 Leg
- 3 Border
- 2 Main Act
- 1 Hard Header



KEY

- ETC Source 4 10° 750w
- ETC Source 4 19° 750w
- ETC Source 4 26° 750w
- ETC Source 4 36° 750w
- ETC Source 4 50° 750w
- ETC Source 4 19° Lustr 2 171w
- ETC Source 4 26° Lustr 2 171w
- ETC Source 4 36° Lustr 2 171w
- ETC Colorsourc Spot 14° 160w
- ETC Colorsourc Spot 19° 160w
- ETC Colorsourc Spot 26° 160w
- ETC Colorsourc Spot 36° 160w
- ETC Source 4 Par MFL 575w
- Altman Fresnel 2000w
- Altman Fresnel 5000w
- Robe Robin LED wash 300w
- High End Solaframe 1000
- High End Solaframe 3000
- Varilite VLX Wash
- Color Kinetics ColorBlast TRX 72"

LABEL LEGEND

GEL COLOR — — BARREL DEGREE

1 — UNIT NUMBER

CHANNEL NUMBER — — 2

NOTES

Units are 1/6" centers (Unless noted)
 Trims are from SHOW DECK
 Please have extra R132 & R119 of Focus

VERSIONS

Version	Date & Note
V1	

THIS DRAWING REPRESENTS VISUAL CONCEPTS AND CONSTRUCTION SUGGESTIONS ONLY. IT DOES NOT REPLACE THE KNOWLEDGE AND ADVICE OF A LICENSED STRUCTURAL ENGINEER. THE DESIGNER IS UNQUALIFIED TO DETERMINE THE STRUCTURAL APPROPRIATENESS OF THIS DESIGN AND WILL NOT ASSUME RESPONSIBILITY FOR IMPROPER ENGINEERING OR USE.

DIRECTED BY	Corrine Hayes
LIGHTING BY	Michael Winston
SCENERY BY	Jack Golden
COSTUMES	Ash Ludwig
SOUND BY	TBD
ASST. LX DESIGNER	N/A
Master Electrician	Carlie Barton

University of Maryland
 Kay Theatre
 Clarice Smith Performing Arts Center

LA FINTA GIARDINIERA

Michael Winston
 Lighting Designer
 mwinston13@hotmail.com
 206-326-0215
 forthewinston.weebly.com

VERSION:	SCALE:	SHEET
1	3/8" = 1'	4
DATE:	03/15/21	of 4

SECTION